



# shoiba

*carving your life*







# INDEPENDENT FLOORS



While Shilas Towers provide you with a fast paced modern apartment lifestyle, Shilas floors are primarily a throwback to classic bungalow style living, with spacious well-appointed independent floors. What comes through is an attractively packaged choice between a ground floor unit with a spacious open lawn & a back-courtyard to soak in the sun and enjoy the swiftly flowing breeze ; a first floor unit with open to sky terrace; a regular second floor unit with spacious balconies; or a third floor unit with a spacious duplex residential space with a party terrace and a study thrown in with the bedrooms and living rooms; or even better a fourth floor unit with a well designed duplex residential space fully loaded with family lounges and vast terrace spaces good enough to enjoy a rain dance or have that dream party. Whatever is your choice, each floor here offers unhindered views from all the living and master bedroom areas without affecting your privacy.





# A DAY IN YOUR LIFE AT *shilas*

6 AM : Wake Up to the first rays of the sun and the music of the chirp of birds. Gently retract the curtains to reveal a view of your Green Terrace overlooking a crimson sunrise with the clouds gently surrounding you in your Airconditioned apartment! Welcome to Raheja Shilas !!



6:15 AM : Hit the Gym for a Power packed workout. Unwind at the Spa & Steam Sauna, to get that special feeling of being pampered.



7:00 AM : Have a relaxing tea on your Terrace Deck overlooking lush green Landscape and wave out to people on their Morning Jog.



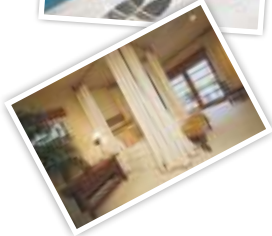
7:30 AM : Dress up in your private Walk-In Closet while the smell of freshly brewed coffee permeates through the fresh morning Air.



8:00 AM : After a Quick Breakfast on the Barstools in your Semi-Open Modular Kitchen with your Partner, leave for Work after leaving your Kid at the Primary School at Shilas.



6:00 PM : Arrive back at Shilas and pick up a couple of Groceries at the Company owned Ultra-Modern Convenience Store within the complex. Head to your floor in one of the High-Speed Elevators. Reach your Home after crossing a Three-Tier security system and immediately head down for a quick game of Tennis.



7:00 PM : Enjoy a drink of your choice relaxing in the Swimming Pool while catching up with some of the other high-profile residents of the complex.



8:00 PM : Receive a call on the Intercom that some friends are over to meet you. Treat them to a night of delight serving Dinner and Drinks on the Open Terrace\* with gentle breeze in your hair, a starlit sky and some Jazz music playing in the background. Rest assured about the electricity. The Power backup is in place. Be the object of Respect and Envy!!!

11:00 PM : Marvel at the soft shadows falling on the rustic Vitrified flooring in your living room and classy Laminated Wooden Floors in your lavish and elegant Bedroom before fading off to a Gentle Sleep.

\*Terrace is part of Shilas Floors

Disclaimer : Actual day may be different according to your lifestyle and timely availability of facilities.





# FLOOR PLANS



4 BHK  
Super Area : 2896 sq. ft.  
Ground Floor



3 BHK Type A  
Super Area : 2131 sq. ft.  
First Floor

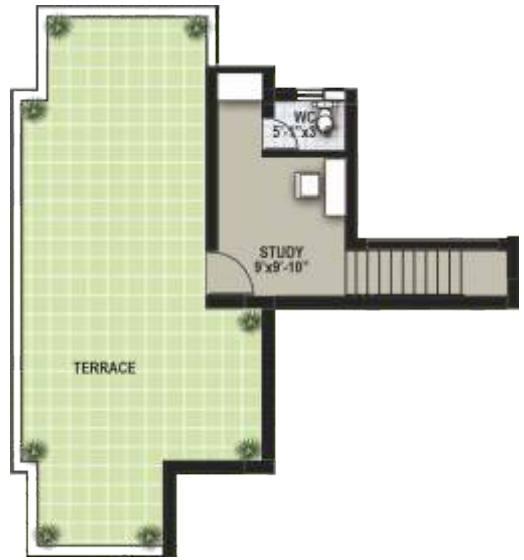


3 BHK Type B  
Super Area : 2102 sq. ft.  
Second Floor

Lower Floor



Upper Floor



3 BHK Type C  
 Super Area : 2317 sq. ft.  
 Terrace : 556 sq. ft.  
 Third Floor

Lower Floor



Upper Floor

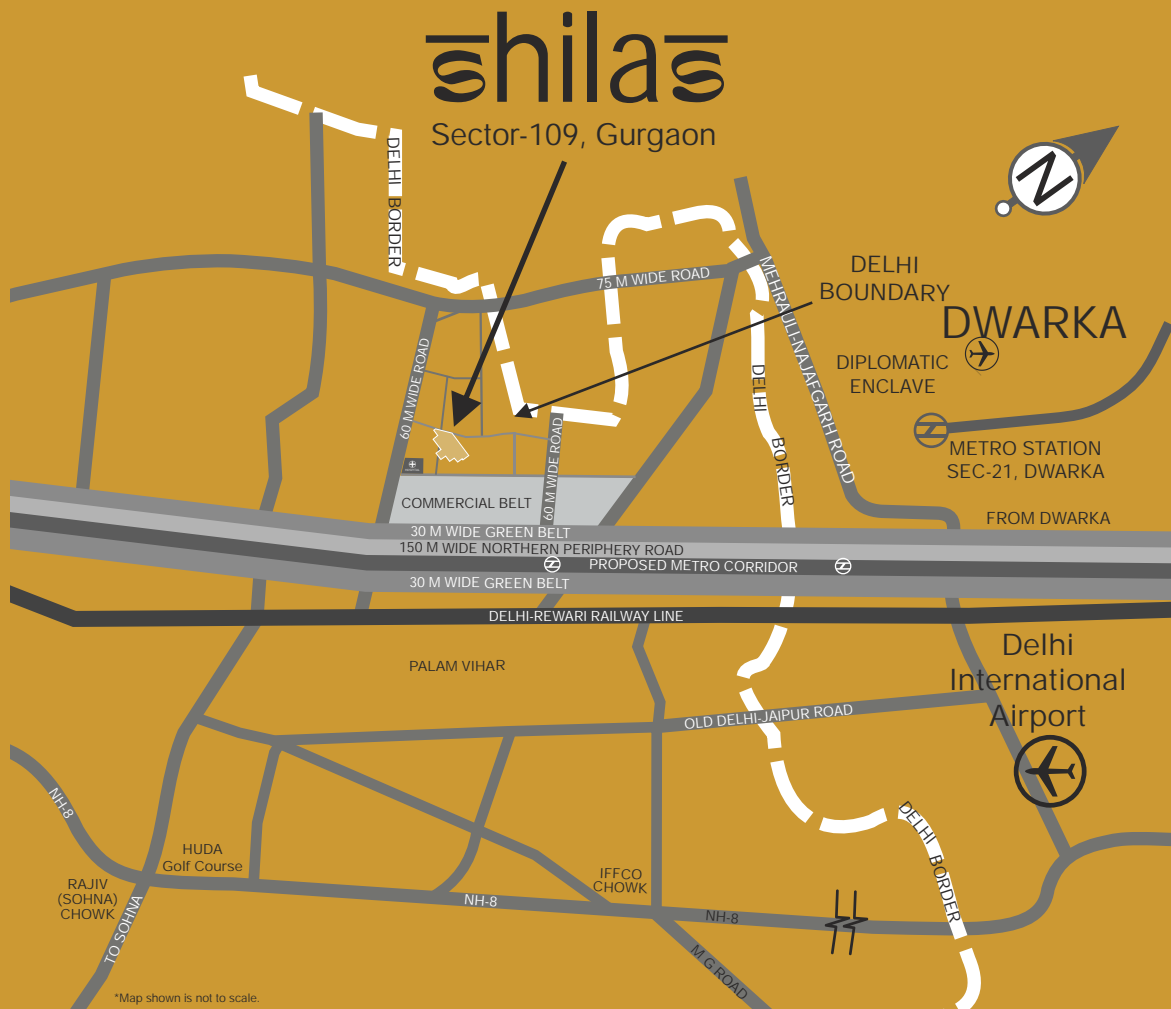


3 BHK Type D  
 Super Area : 1920 sq. ft.  
 Terrace : 442 sq. f. t.  
 Fourth Floor





# LOCATION MAP



- ◆ Approx. 5 minutes from Terminal-3 of IGI Airport\*, New Delhi in Sector-109, Gurgaon (shall be accessible from proposed Gurgaon Northern Periphery Road) and just a few hundred metres from Delhi Border.
- ◆ Right next door to Palam Vihar, Dwarka, Reliance SEZ, Raheja SEZ, proposed new Diplomatic Enclave and proposed Metro Line.
- ◆ Health Club, Spa, Steam, Sauna, Business Lounge, Departmental Store, Creche.
- ◆ Dedicated Access Parking, Swimming Pool, CCTV, 24x7 Security, Waste Management, Lifts, Wi-Fi connectivity (Wi-max, if technology permits)

\*Subject to free traffic flow



# INDIA'S PREMIUM BRAND



RAHEJA DEVELOPERS is today large enough to be counted amongst the foremost real estate companies in India, but in Essence, it is small enough to address each customers' personalized needs and expectations. Built on a legacy of over 21 years of honored commitments, Integrity, Innovation and timely delivery of Quality Projects, RAHEJA is a name that today exudes TRUST. We don't just build Homes / Offices / Malls / SEZs with brick and mortar, but also with feelings and emotions, because we know that the space we create is not merely a House for you , but a HOME purchased with your hard earned money!!

That is the reason why all our projects are always constructed on time with specifications and construction quality as per commitment. The projects under the new Gurgaon Masterplan are no different and have successfully carried forward this legacy of trust & transparency. RAHEJA invites you to be a part of their huge FAMILY of Happy Clientele!!



# Buy Sell Floors In Raheja Shillas Gurgaon Dwarka Expressway

Call - 9654953105 / 9654953152

[www.gurgaonpropertybazaar.in](http://www.gurgaonpropertybazaar.in)

